



Customer: **Iconic Remedies**
 Customer Sample ID: **Full Spectrum 1000mg**
 Laboratory Number: **20D0121-07**
 Servings per Container: **30**
 Density: **0.9425**



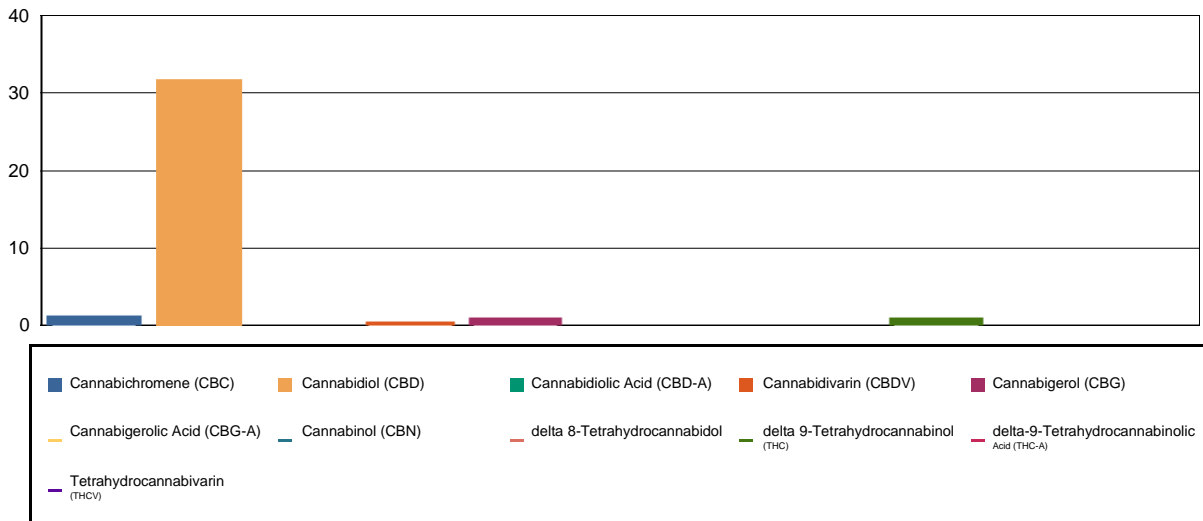
Cannabinoid Profile

Extraction Technician: DF
 Analytical Chemist: CB

Extraction Date(s)	Analysis Date(s)
2/2/2023	2/2/2023

Cannabinoids (HPLC)		Results		
	LOD (mg/mL)	%	mg/mL	mg/bottle
Cannabidivarin (CBDV)		0.05	0.487	14.6
Cannabidiolic Acid (CBD-A)	<0.090			
Cannabigerolic Acid (CBG-A)	<0.090			
Cannabigerol (CBG)		0.11	1.07	32.0
Cannabidiol (CBD)		3.38	33.8	1014
Tetrahydrocannabivarin (THCV)	<0.090			
Cannabinol (CBN)	<0.090			
delta 9-Tetrahydrocannabinol (THC)		0.10	0.996	29.9
delta 8-Tetrahydrocannabidol	<0.090			
Cannabichromene (CBC)		0.13	1.27	38.0
delta-9-Tetrahydrocannabinolic Acid (THC-A)	<0.090			
Cannabinoids Total		%	mg/mL	
Max Active THC		0.10	1.00	
Max Active CBD		3.38	33.80	
T.Active Cannabinoids		3.73	37.30	
Total Cannabinoids		3.77	37.70	
Ratios				
31.91:1 CBD to THC		0.03:1 THC to CBD		

Cannabinoid (mg/mL)



Altitude Consulting, LLC utilizes NIST traceable Reference Standards and Certified Reference Material to calibrate analytical instruments along with proven analytical methods. The methods are applied in the most ethical manner following good laboratory practice guidelines. The results of this report are based solely on the sample submitted and cannot be reproduced.