



Customer: Iconic Remedies
Customer Sample ID: Full Spectrum CBD 500mg
Laboratory Number: 20D0121-06
Servings per Container: 30
Density: 0.9425



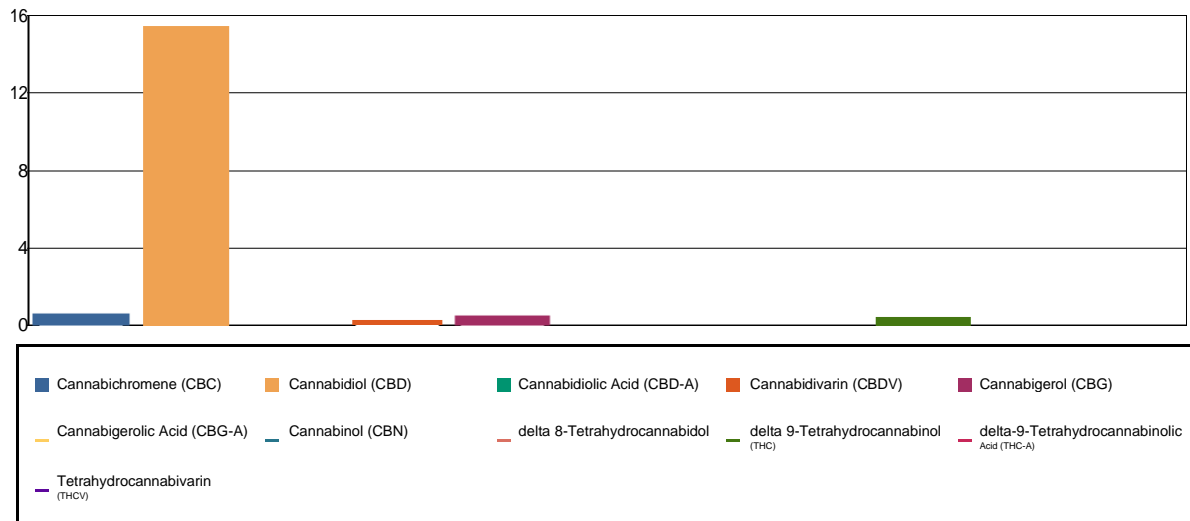
Cannabinoid Profile

Extraction Technician: DF
Analytical Chemist: CB

Extraction Date(s)	Analysis Date(s)
2/2/2023	2/2/2023

Cannabinoids (HPLC)		Results		
	LOD (mg/mL)	%	mg/mL	mg/bottle
Cannabidivarin (CBDV)		0.03	0.286	8.59
Cannabidiolic Acid (CBD-A)	<0.090			
Cannabigerolic Acid (CBG-A)	<0.090			
Cannabigerol (CBG)		0.05	0.503	15.1
Cannabidiol (CBD)		1.68	16.8	504
Tetrahydrocannabivarin (THCV)	<0.090			
Cannabinol (CBN)	<0.090			
delta 9-Tetrahydrocannabinol (THC)		0.05	0.459	13.8
delta 8-Tetrahydrocannabidol	<0.090			
Cannabichromene (CBC)		0.06	0.598	17.9
delta-9-Tetrahydrocannabinolic Acid (THC-A)	<0.090			
Cannabinoids Total		%	mg/mL	
Max Active THC		0.05	0.46	
Max Active CBD		1.68	16.80	
T.Active Cannabinoids		1.85	18.50	
Total Cannabinoids		1.87	18.70	
Ratios				
33.58:1 CBD to THC		0.03:1 THC to CBD		

Cannabinoid (mg/mL)



Altitude Consulting, LLC utilizes NIST traceable Reference Standards and Certified Reference Material to calibrate analytical instruments along with proven analytical methods. The methods are applied in the most ethical manner following good laboratory practice guidelines. The results of this report are based solely on the sample submitted and cannot be reproduced.